

A photograph of three people sitting on a porch. On the left is a young woman with curly brown hair, wearing a blue button-down shirt and black pants, smiling. In the center is an elderly woman with short, curly white hair, wearing a pink patterned top, also smiling. On the right is a young girl with dark hair in a bun, wearing a light green shirt, looking directly at the camera. They are sitting on a dark metal railing in front of a brick wall and a doorway.

Update on Apple Health and Homes

December 6, 2023

Joint Select Committee on
Health Care and Behavioral
Health Oversight

Presenters:

- Melodie Pazolt - Apple Health and Homes Managing Director | Department of Commerce
- Matt Christie - Foundational Community Supports Supervisor | Health Care Authority



Washington State
Department of
Commerce

Washington State
Health Care Authority

Introduction

- ▶ Orientation to Foundational Community Supports (FCS) and its goals
- ▶ Program overview
- ▶ Connection to Apple Health and Homes

Foundational Community Supports

What is FCS?

- ▶ Supportive housing and supported employment services under 1115 Medicaid Transformation Project waiver (MTP 2.0)
- ▶ Launched Jan 2018, 40,000+ individuals enrolled, 200+ providers
- ▶ The cornerstone of supportive services in Apple Health and Homes initiative

? Why housing and employment?

- ▶ Access to housing and employment services supports recovery
- ▶ Focus on social determinants of health with targeted benefits to
 - ▶ Reduce rates of homelessness and create pathways out of poverty
 - ▶ Reduce cost to Medicaid and larger health care system
 - ▶ Promote self-sufficiency and health equity



Eligibility criteria

FCS benefits are reserved for people with the greatest need. To qualify, an individual must:

- 1 Be enrolled in Apple Health
- 2 Be at least 18 years old (SH) or 16 years old (SE)
- 3 **Meet the requirements for complex needs.**
You have a **medical necessity** related to mental health, substance use disorder (SUD), activities of daily living, or complex physical health need(s) that prevents you from functioning successfully or living independently.
- 4 Meet the requirements for qualifying risk factor

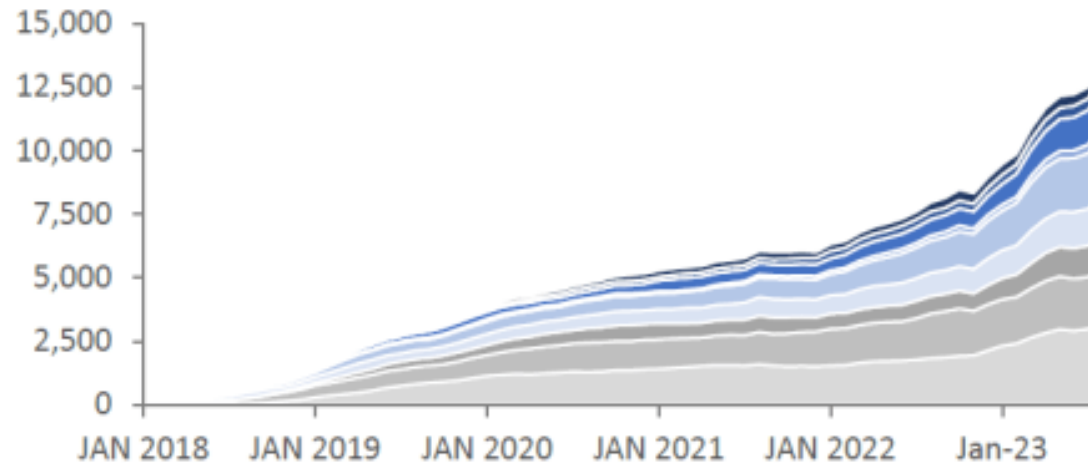


FCS Services

▶ **Supportive Housing (SH)**

- ▶ Housing assessments and planning
- ▶ Outreach to landlords
- ▶ Connecting with community resources
- ▶ Care coordination
- ▶ Assisting with housing applications
- ▶ Education, training, and coaching (resolve disputes, advocacy)
- ▶ Tenancy sustaining services

Enrollment growth by Accountable Community of Health

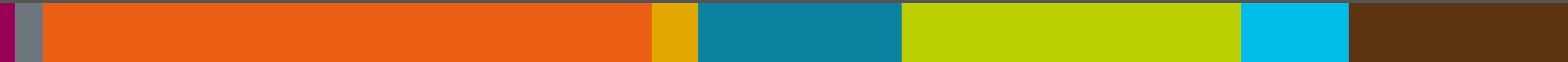


ACH Region	Count	%
Better Health Together (BHT)	3,146	24%
Cascade Pacific Action Alliance (CPAA)	2,125	16%
Elevate Health (EH)	1,333	10%
Greater Columbia ACH (GCACH)	1,569	12%
Healthier Here (HH)	2,272	17%
North Central ACH (NCACH)	378	4%
North Sound ACH (NSACH)	1,437	11%
Olympic Community of Health (OCH)	504	4%
Southwest ACH (SWACH)	504	4%

Connection to Apple Health and Homes

- ▶ Apple Health and Homes builds on FCS supportive housing services and creates housing units and vouchers to support target population
- ▶ Intentionally addresses homelessness with a housing and health care solution
 - ▶ Medicaid services, state-funded housing and rental assistance
- ▶ Targets subset of FCS enrollees who are:
 - ▶ Chronically homeless
 - ▶ Exiting institutional settings
 - ▶ Experiencing frequent stays at adult residential care facilities or residential treatment facilities

Apple Health and Homes



Essential Pieces of the AHAH Initiative



ESHB1866 passed in the 2022 legislative session

- *“Housing is an indispensable element of effective health care. Stable housing is a prerequisite to addressing behavioral health needs and lack of housing is a precursor to poor health outcomes; a home, health care, and wellness are fundamental for Washington residents.”*
- Builds upon FCS to merge the three legs of the stool, expand and improve the quality of Permanent Supportive Housing
 - Housing Vouchers/Subsidies/(O&M)
 - Supportive Housing Services
 - Bricks and mortar
- Established the Office of Apple Health and Homes (AHAH) within the Department of Commerce

We strengthen communities



HOUSING AND HOMELESSNESS



INFRASTRUCTURE AND BROADBAND



SMALL BUSINESS ASSISTANCE



ENERGY



PLANNING AND TECH ASSISTANCE



COMMUNITY SERVICES AND FACILITIES

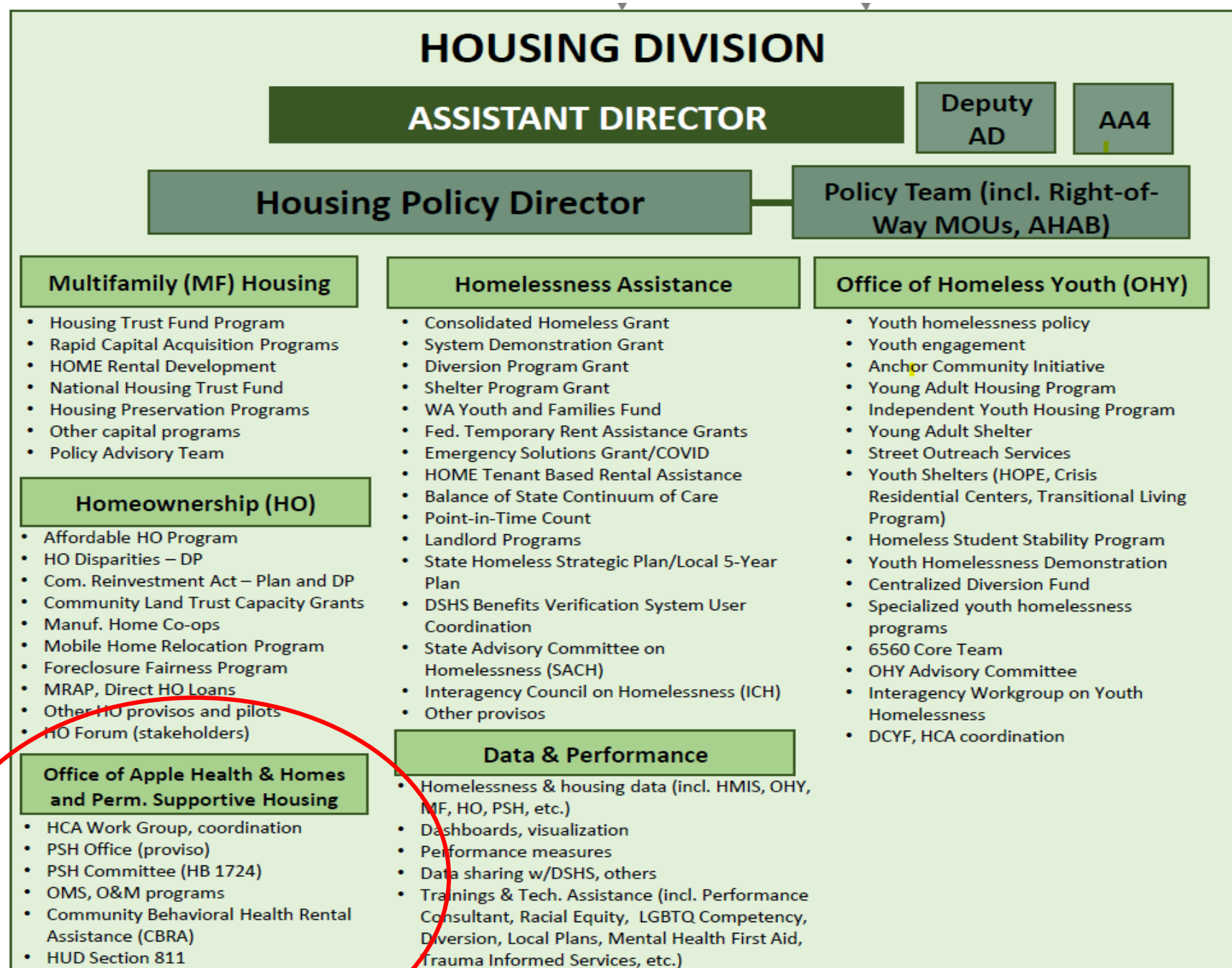


CRIME VICTIMS AND PUBLIC SAFETY

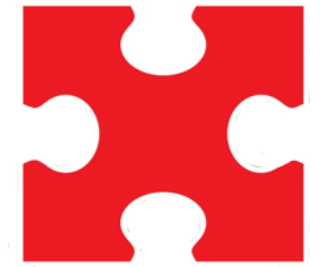


ECONOMIC DEVELOPMENT

AHAH-PSH is part of the Dept. of Commerce's Housing Division



AHAH Capital Financing Program



RCW [43.330.187](#) – Rapid PSH Construction and Acquisition Program

10% of the funds must be for organizations serving marginalized populations

SFY23: 7 Awardees totaling \$ 41,402,100

- **241 PSH units, incl. 122 AHAH units**
- Projects are located in the following regions:
 - Great Rivers
 - King
 - Salish
 - North Sound
 - Southwest

SFY24: 11 Applications received totaling \$73,155,710

- **434 PSH units, incl. 222 AHAH units**

AHAH Provider Capacity Building Grants



RCW [43.330.181](#) – Provider Capacity Grants

SFY23: 27 Awardees (\$25,000 awards – 12 different counties)

- 9 – Add FCS to their book of business
- 11 – Expand FCS (population/region)
- 7 – Unique project

SFY24: RFA Currently underway

- 90+ applications = 40 Awards (\$25,000 each)
 - 5 Pathways
 - Adding FCS to their book of business
 - Enhancing capacity to provide FCS (technology, etc.)
 - Establishing or strengthening partnerships (Health & Housing)
 - Enhancing the quality of PSH
 - Become a BH Support Service

Technical Assistance



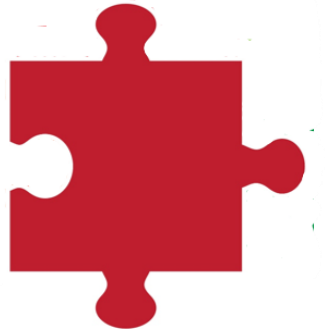
- Multiple joint presentations (conferences, webinars, etc.)
 - 41 joint presentations since Dec 2023
- Joint webinars (HCA, Amerigroup, DSHS, Commerce) for capacity building grantees
- Enterprise Community Partners capital and pre-development technical assistance
- Community Health Network of WA – Learning Collaborative
- Monthly PSH Technical Assistance Collaborative
- Housing Finance Commission – Health and Housing Collaboration (Robert Wood Johnson Grant)
- AHAH PSH Trainer hired

Rent Assistance



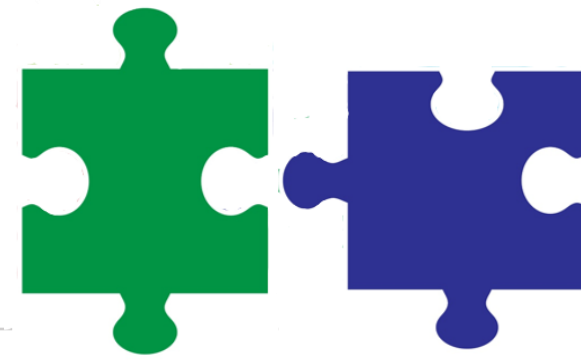
- Funds, Unit Tracking, and Unit Rental Exchange (FUTURE) Platform will track the tenant- and project-based rent assistance (TBRA, PBRA) for individuals enrolled in the AHAH program.
 - Health Care Authority, their Coordinating Entity (Amerigroup), Department of Social and Health Service's Research and Data Analysis Division and Aging and Long-term Supports Administration (AL TSA) provided valuable input were part of the testing team.
- Phase II: Track the available/open units similar to a rental registry (created through the AHAH capital funding).
- Phase III: Public dashboard meeting the legislative requirement of the initiative.

Advisory Group



- FCS Advisory Committee – AHAH Subcommittee 10/24/23
 - Improvement discussions included:
 - Chronic homelessness eligibility determinations
 - FCS enrollment/disenrollment
 - Reaching marginalized communities
 - Training opportunities

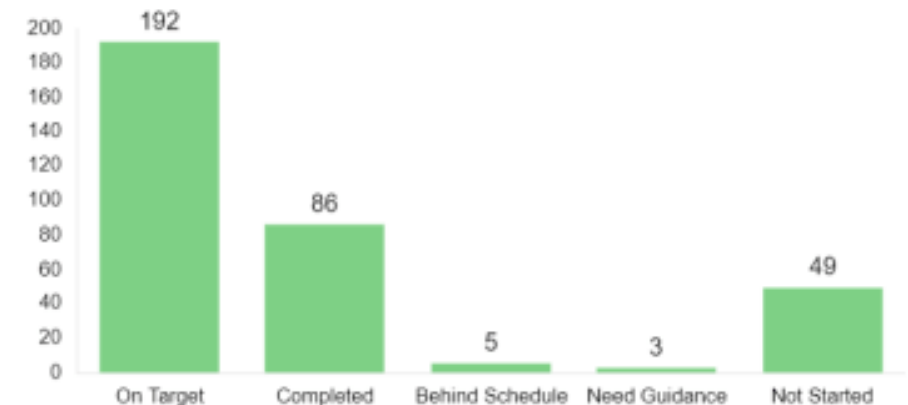
Multi-agency Planning and Coordination Project Management, Performance Measures



RCW [43.330.181](#)

- Collaborate with other divisions/systems
 - Bi-weekly planning meetings (All partners)
 - Multiple internal planning meetings (MHU + AHAH)
- Establish performance measures, metrics/outcomes (Evaluation)
- Develop a public dashboard (FUTURE)
- Create project management plan:
 - Project Management Dashboard
- [AHAH Website](#)

Implementation Plan Status





Contact

Melodie Pazolt

Apple Health and Homes Managing Director
Department of Commerce
Email: melodie.pazolt@commerce.wa.gov

Evan Klein

Special Assistant
Legislative & Policy Affairs
Health Care Authority
Email: evan.klein@hca.wa.gov

Shawn O'Neill

Legislative Relations Manager
Health Care Authority
Email: shawn.oneill@hca.wa.gov